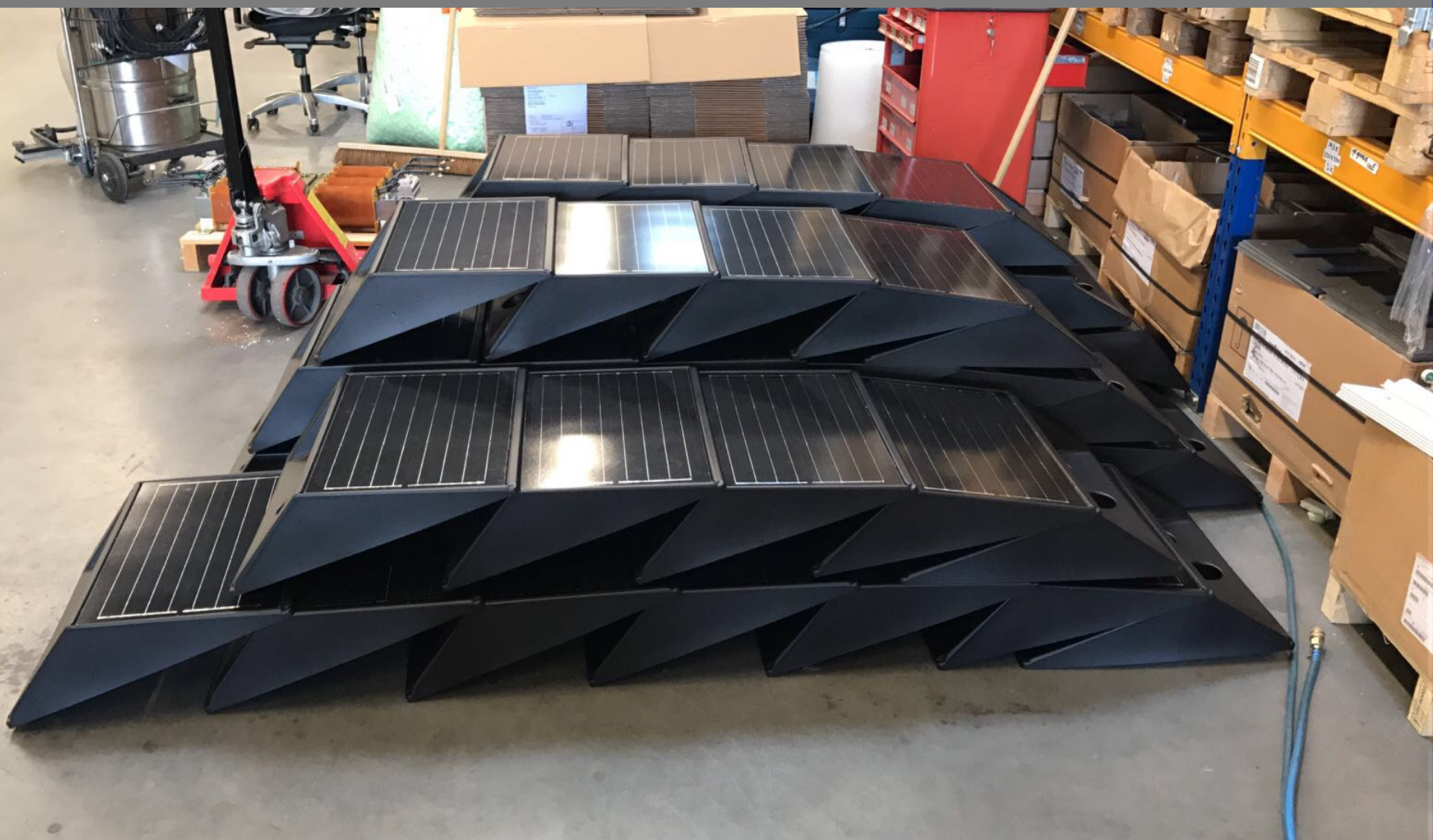


# Pilot installaties

Production / Assembly

September / October 2017







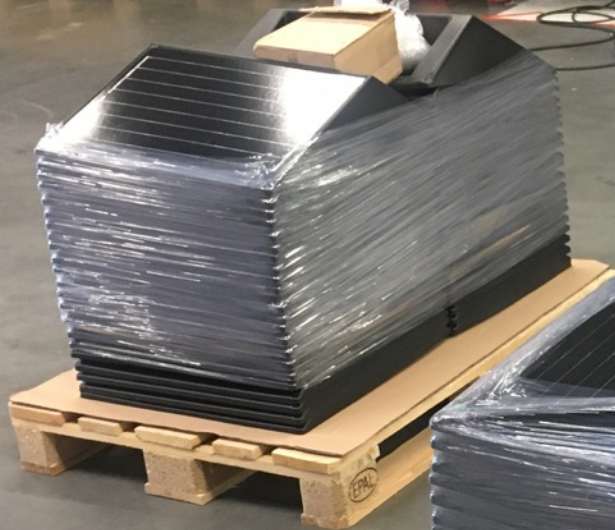


SKF

U150

0010  
21511 007  
ET 280.0X260.0F 6 G00-35  
M 1000000 1111 100 11 1000 1  
209 00 00 000 1







# Pilot installaties

Project Schagen 01

17 October 2017































































# Pilot installaties

## Project Schagen 02

17 October 2017

























# Pilot installaties

## Project Schagen 03

17 October 2017



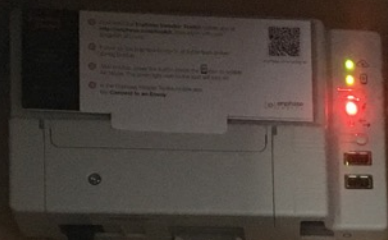














# Pilot installaties

Project Soest 01

18 September 2017













# Pilot installaties

Project Heemstede 01

04 October 2017





































